



Certificate SGSHK-COC-010724  
SGSHK-CW-010724

The Organization

# BillerudKorsnäs China Limited

Unit 1806, Lippo Plaza, No. 222, Huaihai Middle Road,  
Shanghai, P.R. China

has been assessed and certified as meeting the requirements of

## FSC® Chain-of-Custody

The company was assessed against the following standards:  
FSC-STD-40-004 Version 3.0 FSC Standard for Chain of Custody Certification – April 2017  
FSC-STD-50-001 V1-2 Requirements for use of the FSC trademarks by Certificate Holders – November 2010

for the products detailed in the scope below

**Purchase, storage and sales of FSC Mix & FSC CW paper and paperboard in roll or in sheet (transfer system)**  
**Purchase of FSC Mix & FSC CW paper and paperboard in roll or in sheet, outsourcing cutting, sales of FSC Mix & FSC CW paper and paperboard in roll or in sheet (transfer system)**

This certificate is valid from 23 November 2017 until 22 November 2022  
and remains valid subject to satisfactory surveillance audits.

Recertification audit due before 16 May 2022

Issue 3. Certified since November 2012

SGS Ref # CN12/20397

Authorised by

SGS Hong Kong Limited  
17/F, The Octagon, No.6 Sha Tsui Road,  
Tsuen Wan, New Territories, Hong Kong.  
t +(852)2334 4481 f +(852)2333 2257 [www.sgs.com](http://www.sgs.com)

The validity of this certificate shall be verified on <http://info.fsc.org/>  
For the full list of product groups covered by the certificate see <http://info.fsc.org/>

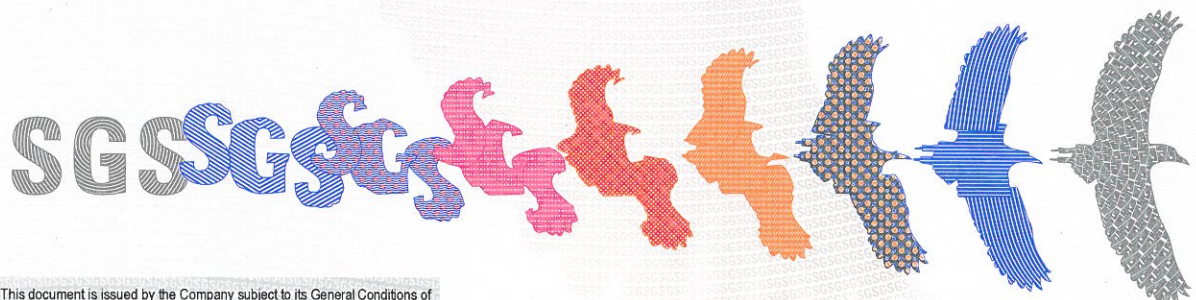
This certificate itself does not constitute evidence that a particular product supplied by the certificate holder is FSC-certified (or FSC Controlled Wood).  
Products offered, shipped or sold by the certificate holder can only be considered covered by the scope of this certificate when the required FSC claim is clearly stated on sales and delivery documents

This certificate remains the property of SGS. The certificate and all copies or reproductions shall be returned or destroyed if requested by SGS.

Page 1 of 1



The mark of responsible forestry



This document is issued by the Company subject to its General Conditions of Certification Services accessible at [www.sgs.com/terms\\_and\\_conditions.htm](http://www.sgs.com/terms_and_conditions.htm). Attention is drawn to the limitations of liability, indemnification and jurisdictional issues established therein. The authenticity of this document may be verified at <http://www.sgs.com/en/certified-clients-and-products/certified-client-directory>. Any unauthorized alteration, forgery or falsification of the content or appearance of this document is unlawful and offenders may be prosecuted to the fullest extent of the law.